

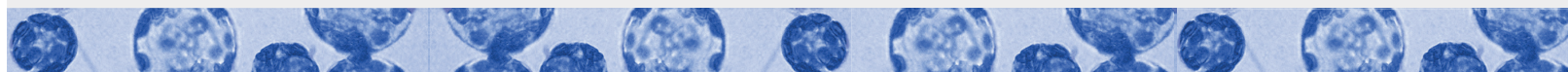


ICGEB

International Centre for Genetic
Engineering and Biotechnology

Developing
Knowledge

ICGEB Funding Programmes at a glance



Fellowships

Meetings & Courses

Research Grants

Calls

One call per year for Pre-doctoral Fellowships
Two calls per year for Postdoctoral Fellowships
Four calls per year for short-term Fellowships

One call per year

One call per year

Eligibility

Nationals of ICGEB Member States

ICGEB Member States

All ICGEB Member States *[except Italy]*

Annual deadlines for Applications

Pre-doc: 31 March
Postdoc: 31 March & 30 September
Short-term: 31 March, 30 June, 30 September
& 31 December

28 February

30 April

Submission

On-line via the ICGEB dedicated Website

On-line via the ICGEB dedicated Website

By e-mail
Principal Investigators must submit their complete
application in a pdf file to the ICGEB Liaison Officer
for endorsement, with a copy also to crp@icgeb.org

Endorsement

The ICGEB will subsequently send the Pre-
and Postdoctoral applications received
to Liaison Officers, asking for endorsement

The ICGEB will send the
proposals received to Liaison Officers, requesting
endorsement by 31 March

Liaison Officers will confirm
endorsement to ICGEB, and to the applicant,
by e-mail by 31 May

No. of endorsed applications per Member State

No limit

No limit

3 standard Research Grant applications PLUS
2 Early Career Return Grant applications

Website

www.icgeb.org/fellowships.html

www.icgeb.org/meeting-proposals.html

www.icgeb.org/research-grants.html

Contacts

Fellowships Unit

Padriciano, 99 - 34149 Trieste, ITALY
Tel.: +39-040-3757347/7305 Fax: +39-040-226555
Email: fellowships@icgeb.org

Conferences Unit

Padriciano, 99 - 34149 Trieste, ITALY
Tel.: +39-040-3757332/7333, Fax: +39-040-226555
Email: MeetingOrganisers@icgeb.org

CRP-ICGEB Research Grants Unit

Padriciano, 99 - 34149 Trieste, ITALY
Tel.: +39-040-3757382, Fax: +39-040-226555
Email: crp@icgeb.org



ICGEB Member States

Afghanistan, Algeria, Argentina, Bangladesh, Bhutan, Bosnia and Herzegovina, Brazil, Bulgaria, Burkina Faso, Burundi, Cameroon, Chile, China, Colombia, Costa Rica, Côte D'Ivoire, Croatia, Cuba, Ecuador, Egypt, Eritrea, FYR Macedonia, Hungary, India, Iran, Iraq, Italy, Jordan, Kenya, Kuwait, Kyrgyzstan, Liberia, Libya, Malaysia, Mauritius, Mexico, Montenegro, Morocco, Namibia, Nigeria, Pakistan, Panama, Peru, Poland, Qatar, Romania, Russian Federation, Saudi Arabia, Senegal, Serbia, Slovakia, Slovenia, South Africa, Sri Lanka, Sudan, Syrian Arab Republic, Trinidad and Tobago, Tunisia, Turkey, United Arab Emirates, United Republic of Tanzania, Uruguay, Venezuela, Vietnam



www.icgeb.org

